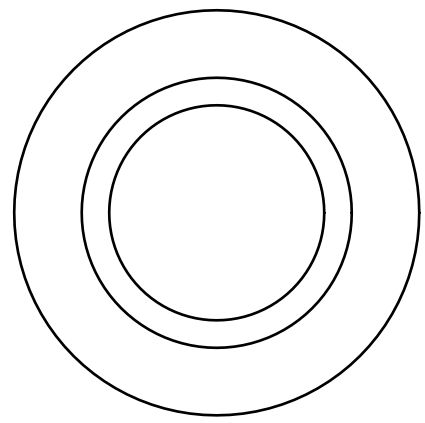


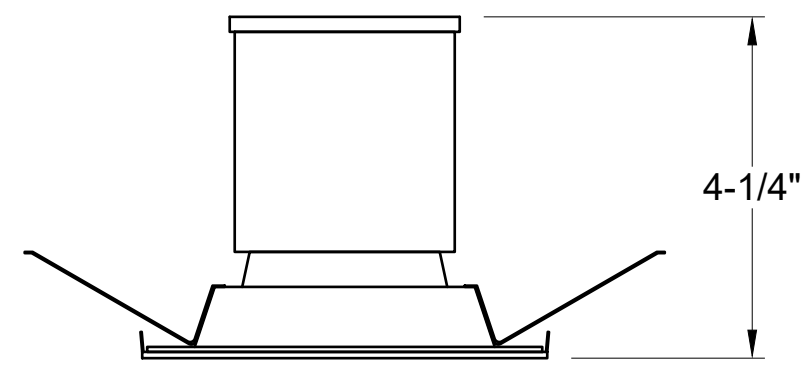
# LIGHT DAM (LD) DETAIL - MASA

## 5" LIGHT DAM TO HOUSE 4" LED RECESSED FIXTURE

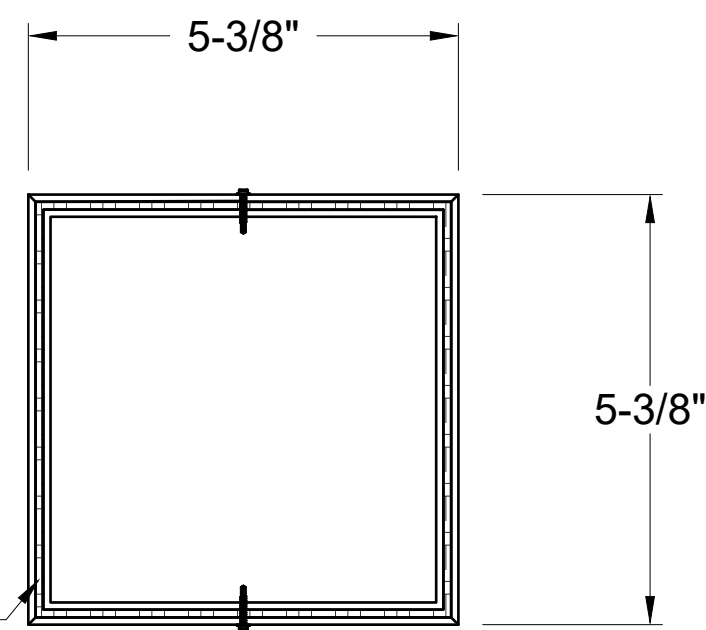
SEE (STANDARD LIGHTING SPEC)



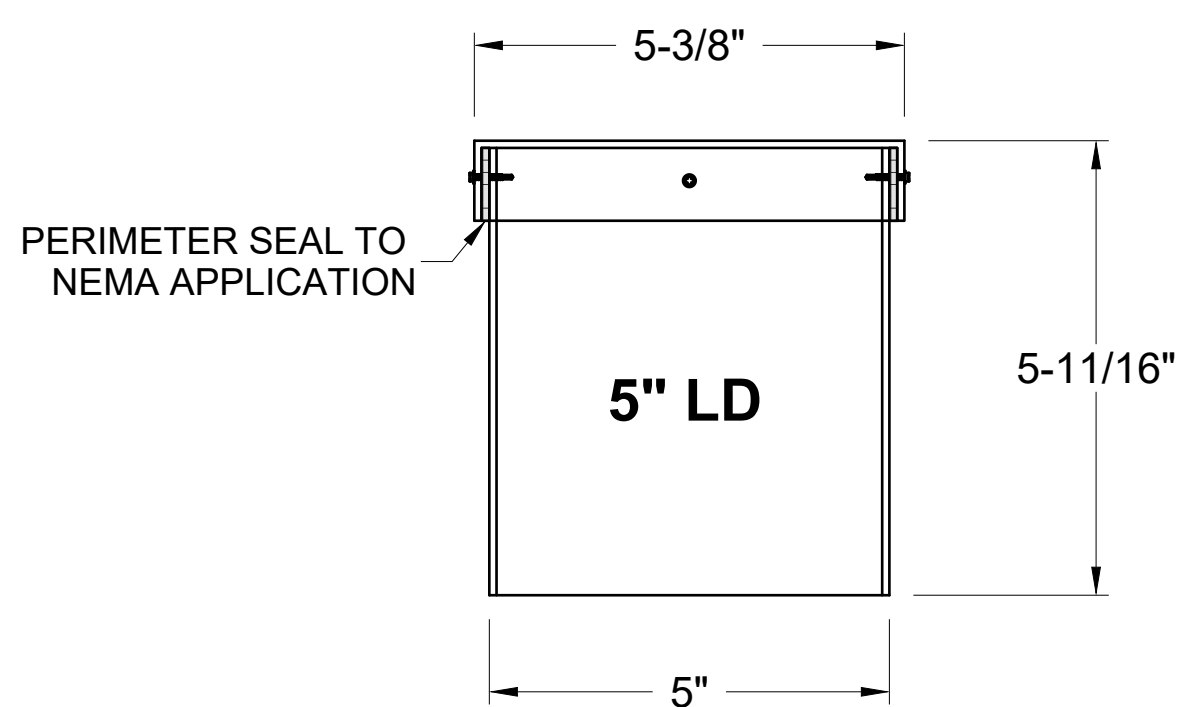
FIXTURE BEZEL  
POWDER COATED TO  
MATCH CANOPY



4" DIA. RECESSED LED  
w/ FIXTURE BEZEL  
SHIPPED LOOSE



**TOP**

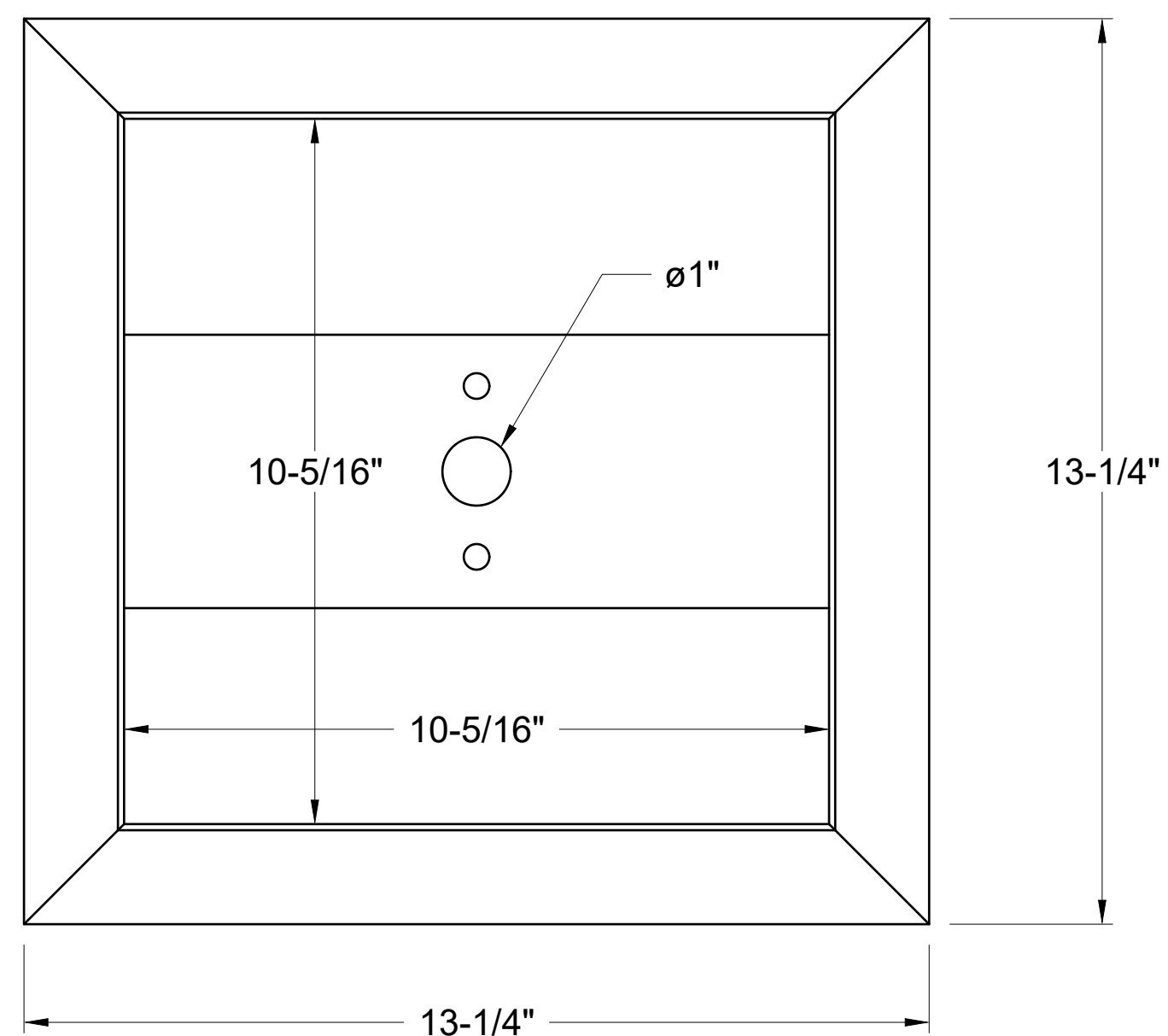


**5" LD**

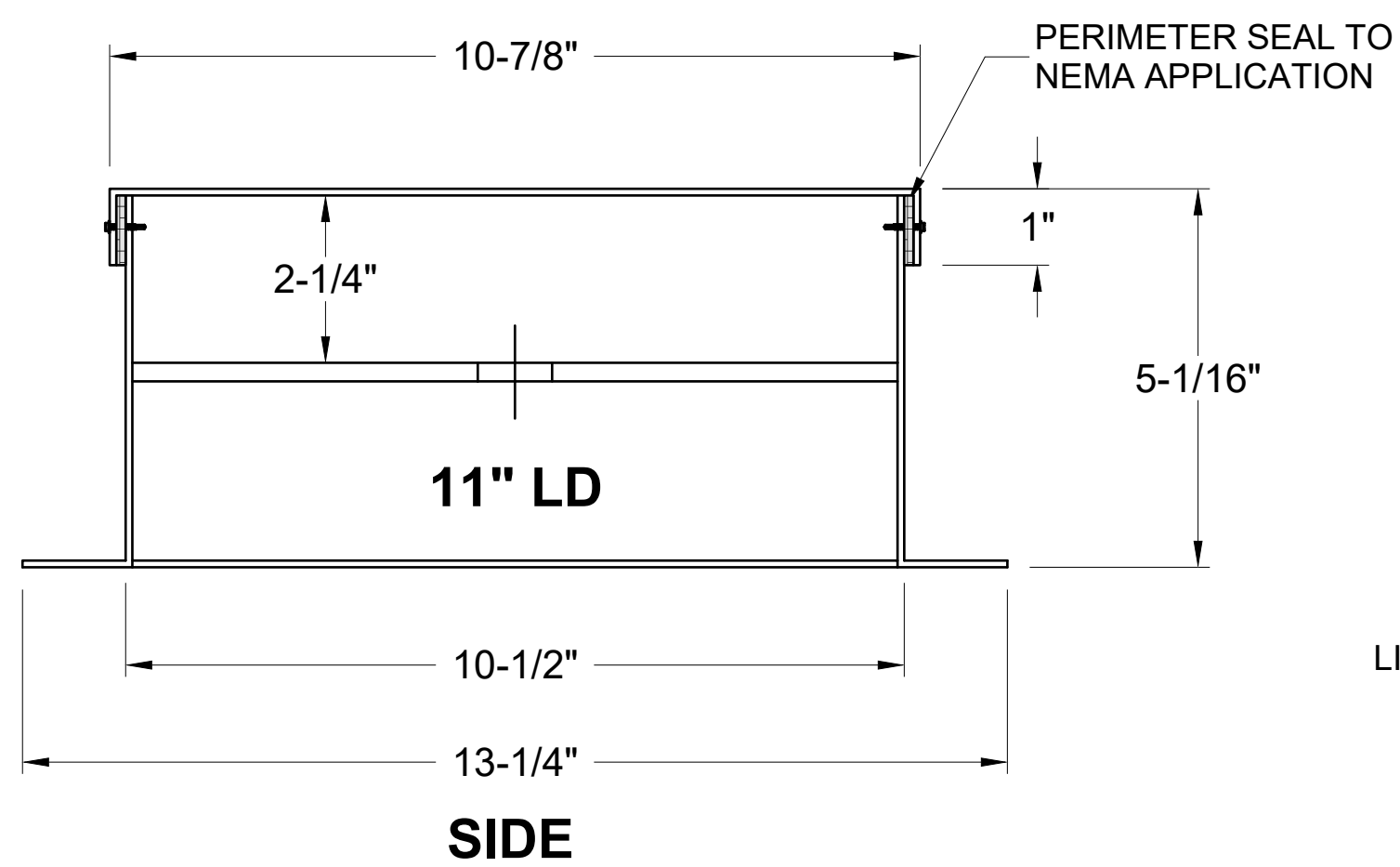
**SIDE**

## 11" LIGHT DAM TO HOUSE 10" LED RECESSED FIXTURE

SEE (STANDARD LIGHTING SPEC)



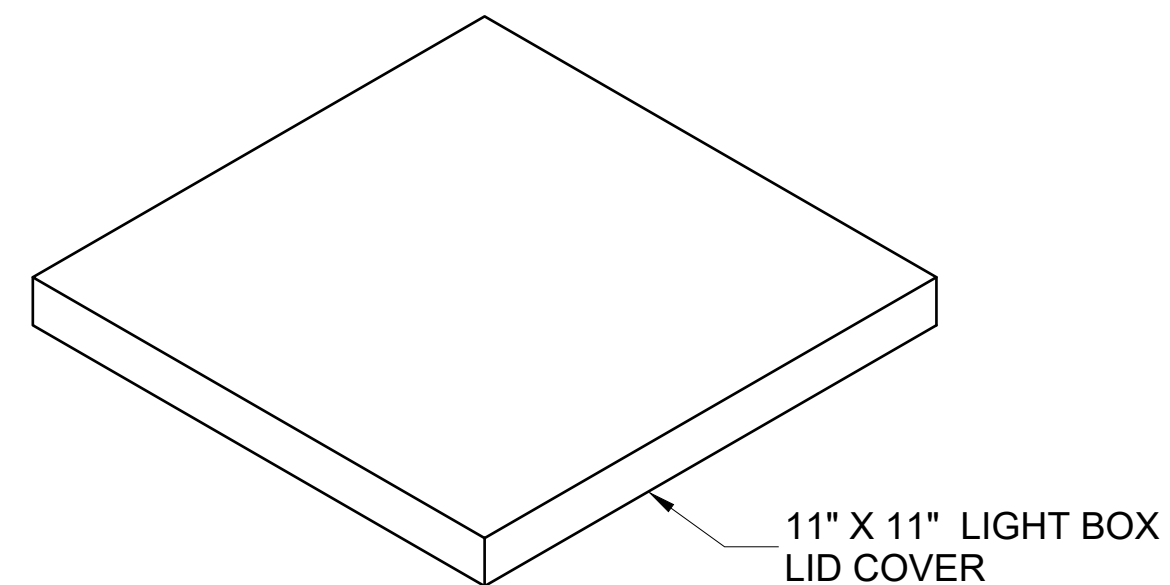
**TOP**



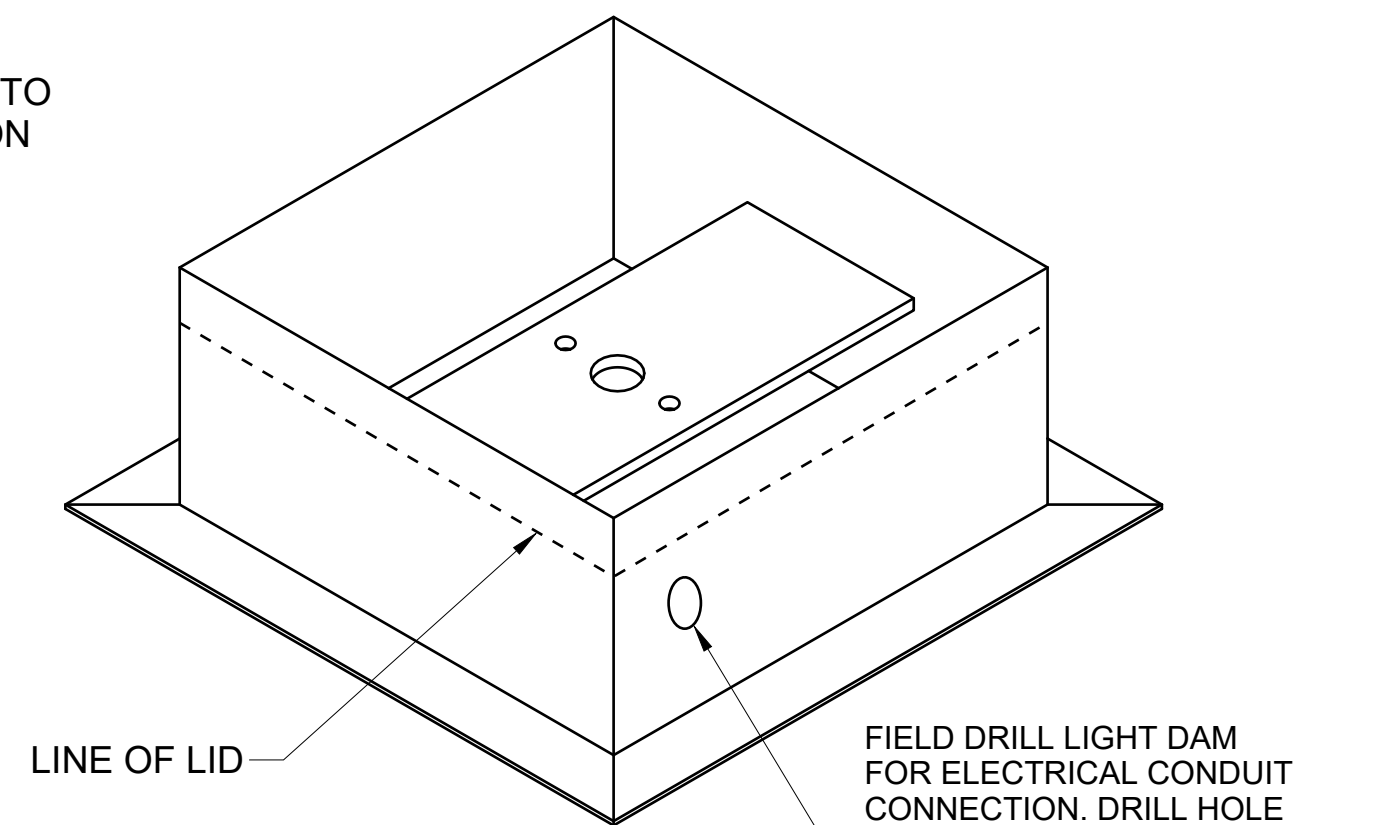
**11" LD**

**SIDE**

LIGHT DAM 11" X 11" X 1/8" REC.  
TUBE, 6061-T6511 ALUM.  
FULLY WELDED TO DECK.  
LID PERIMETER SEALED TO  
NEMA APPLICATION.



11" X 11" LIGHT BOX  
LID COVER

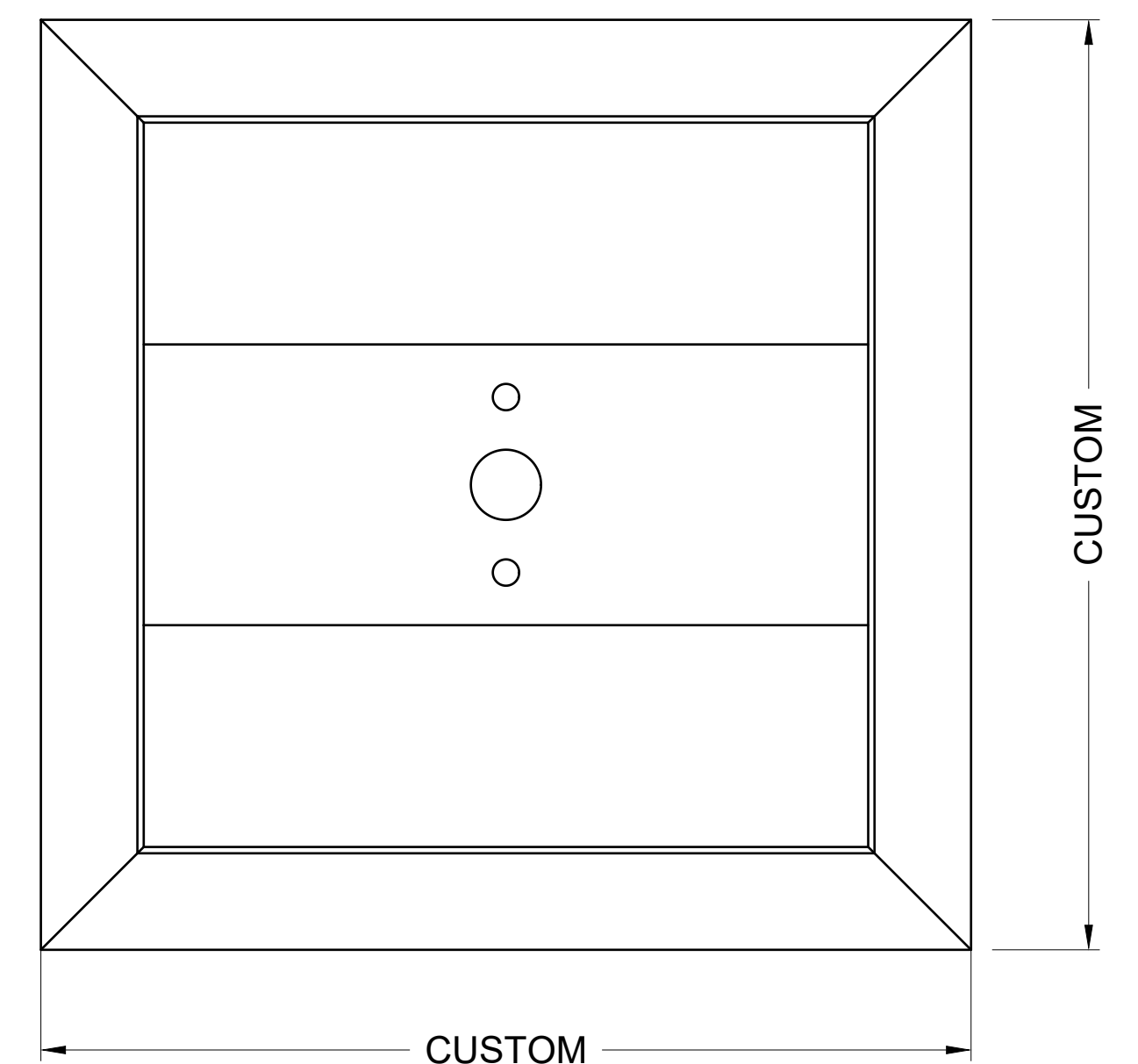


LINE OF LID—

## ISOMETRIC

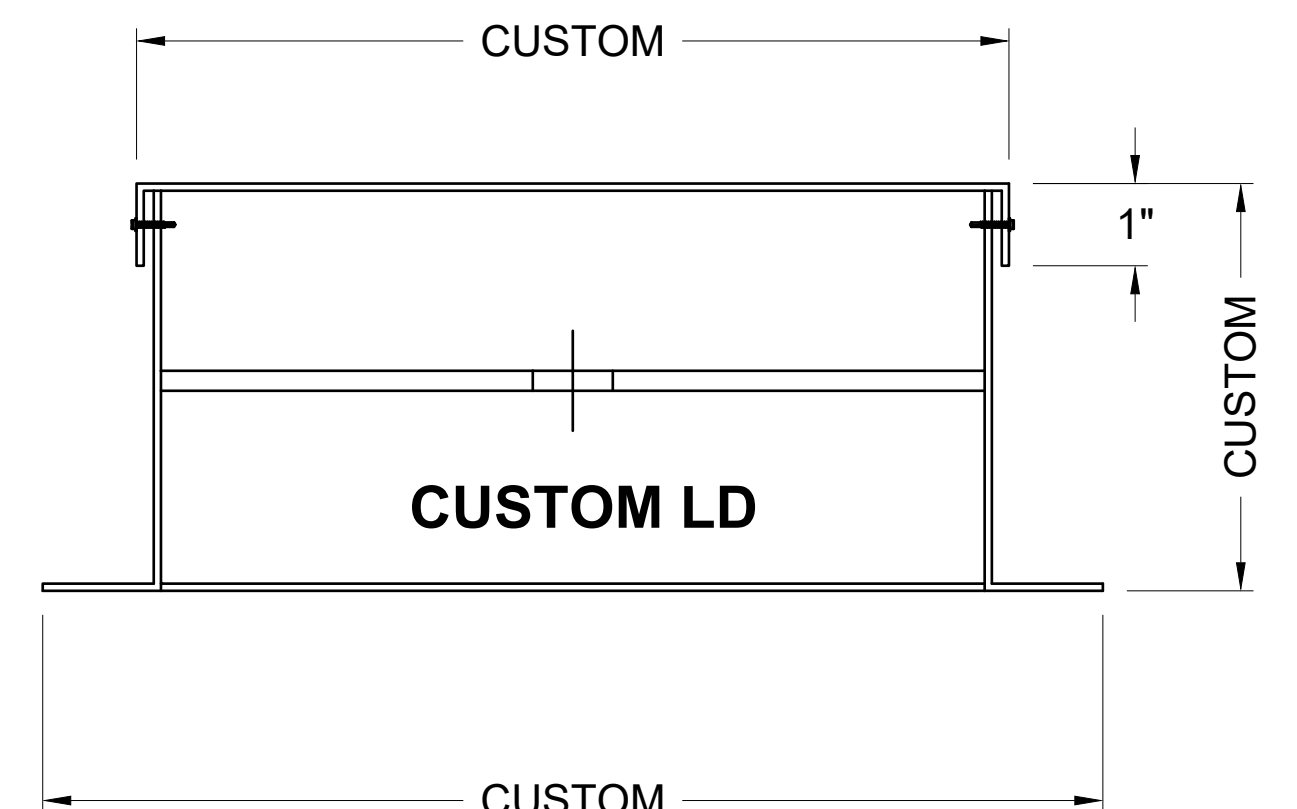
FIELD DRILL LIGHT DAM  
FOR ELECTRICAL CONDUIT  
CONNECTION. DRILL HOLE  
AS HIGH AS POSSIBLE  
WITHOUT CONFLICT WITH LID.  
USE WATER TIGHT CONNECTOR.

**CUSTOM LD TO ACCOMMODATE  
CUSTOMER SUPPLIED LIGHT  
FIXTURE**



— CUSTOM

**TOP**



## CUSTOM LD

— CUSTOM —

**SIDE**

**MASA LIGHT DAM WELDED COMPLETE TO TOPSIDE OF DECK, PENETRATE DECK TO ACCOMMODATE FIXTURE.**